

TECHNICAL DATA SHEET

DN83 Series

Pixim Ultra High Resolution Day/Night WDR Bodied Cameras



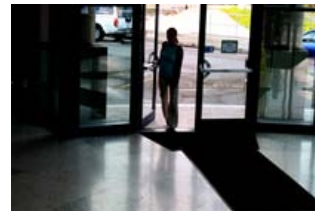
DN83SPX/12



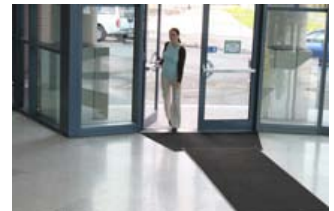
DN83TSPX



Powered by
PIXIM[®]
SEAWOLF



CCD



PIXIM

KEY FEATURES

- 1/3" PIXIM Seawolf CMOS Sensor
- Ultra High Resolution, 690 HTVL
- Vertical Resolution, 460+ VTVL
- Digital Day/Night (DN83SPX)
- Mechanical IR Cut-Filter (DN83TSPX)
- 3D Motion Adaptive Digital Noise Reduction
- Wide Dynamic Range (WDR)
- O.S.D. Menu
- Selectable Gain Control
- Selectable White Balance
- Selectable Back Light Compensation
- Privacy Masking (12 Zones)
- Motion Detection
- Built in UTP (TDN Model)
- RS-485 Communication (TDN Model)
- DC 12V (DDN Model)
- Dual Voltage (TDN Model)
- Lens not Included

ORDERING INFORMATION

DN83SPX/12 DDN Pixim Bodied Camera, 690 HTVL

DN83TSPX TDN Pixim Bodied Camera, 690 HTVL

Pixim provides a number of technical improvements in picture quality for viewing areas of extreme dynamic lighting conditions. The Pixim technology overcomes over exposure problems against strong back-light situations. As each pixel acts as a camera, the picture taken by one pixel does not affect the picture quality captured by other pixels. Based on this technology, the camera delivers a very high quality, high resolution and very accurate picture. Facial & object recognition in a variety of light conditions such as doorways, windows, shadows, high-contrast environment and outdoors with strong light reflections are easily achievable with the Pixim powered cameras

TECHNICAL DATA SHEET

TECHNICAL SPECIFICATION

Model Number	DN83SPX/12	DN83TSPX
Image Sensor	1/3" PIXIM Seawolf CMOS Sensor	
Horizontal Resolution	690 HTVL (Col), 800 HTVL (Mono)	
Vertical Resolution	460+ VTVL	
Signal Processing	17-bit Digital Signal Processing	
Transfer Format	Progressive with Segmented Frames	
Sensitivity (F1.2)	0.1 Lux (Col), 0.001 Lux (Mono)	
Digital Zoom	4x Zoom	
Effective Pixels (H x V)	758 x 540	
Electronic Shutter Speed	1/50 ~ 1/100,000 Sec	
Scanning System	2:1 Interlace	
S/N Ratio	>50dB	
Synchronisation	INT/LL Selectable	
Frequency	Horizontal: 15.625KHz Vertical: 50.00Hz	
Video Output	1.0Vp-p~75Ω	
Day / Night	COLOUR / AUTO / BW	AUTO / COLOUR / BW / EXTERN (ICR)
3D-DNR	OFF / LOW / MIDDLE / HIGH	
Sens-Up	AUTO / OFF (Selectable limit x2 ~ x32)	
WDR	LOW / NORMAL / MIDDLE / HIGH (Max 120db)	
O.S.D.	YES, BUILT-IN	
Gain Control	AUTO / HIGH / LOW / OFF SELECTABLE	
White Balance	ATW / AWB / INDOOR / OUTDOOR / MANUAL	
Back Light Compensation	BLC / OFF SELECTABLE	
Privacy Masking	On/Off (12 Programmable Zones)	
Motion Detection	On/Off (4 Zones)	
Flip	HORIZONTAL / VERTICAL	
UTP	NO	YES
Communication	N/A	RS-485
Operating Conditions	Temperature: -10°C ~ +50°C, Humidity: 95% RH	
Power Supply	DC 12V	DC 12V / AC 24V
Power Consumption	160mA	490mA / 350mA
Dimensions (W x H x D)	63.7 x 64 x 87.4 mm	70.2 x 68.1 x 100.5 mm
Weight	350g	270g

Features and specifications are subject to change for further improvement without any notice